

PLEASE CHECK WWW.MOLEX.COM FOR LATEST PART INFORMATION

Part Number: [0850500000](#)
Status: **Active**
Overview: [din_41612](#)
Description: 2.54mm (.100") Pitch DIN 41612 Receptacle, Style Q/2 Reverse, 32 Circuits

Documents:

[3D Model](#) [RoHS Certificate of Compliance \(PDF\)](#)
[Drawing \(PDF\)](#)

Agency Certification

CSA LR19980
 UL E29179

General

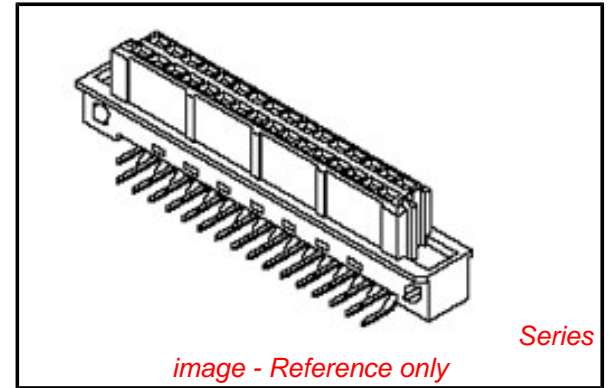
Product Family Backplane Connectors
 Series [85050](#)
 Application Backplane
 Component Type PCB Receptacle
 Overview [din_41612](#)
 Product Name IEC 603-2/DIN 41612
 Style Q/2

Physical

Circuits (Loaded) 32
 Circuits (maximum) 32
 Durability (mating cycles max) 500
 First Mate / Last Break No
 Flammability 94V-0
 Guide to Mating Part No
 Keying to Mating Part None
 Number of Columns 16
 Number of Pairs Open Pin Field
 Number of Rows 2
 Orientation Right Angle
 PC Tail Length (in) 0.110 In
 PC Tail Length (mm) 2.80 mm
 PCB Locator No
 PCB Retention None
 PCB Thickness Recommended (in) 0.063 In, 0.157 In
 PCB Thickness Recommended (mm) 1.60 mm, 3.20 mm
 Packaging Type Bag
 Pitch - Mating Interface (in) 0.100 In
 Pitch - Mating Interface (mm) 2.54 mm
 Pitch - Term. Interface (in) 0.100 In
 Pitch - Term. Interface (mm) 2.54 mm
 Polarized to PCB No
 Stackable No
 Surface Mount Compatible (SMC) No
 Temperature Range - Operating -55°C to +125°C

Electrical

Current - Maximum per Contact 1.5A
 Data Rate 622.0 Mbps
 Real Signals (per 25mm) 20
 Shielded No
 Voltage - Maximum 250V AC (RMS)



EU RoHS

**ELV and RoHS
 Compliant**
REACH SVHC
 Not Reviewed
**Halogen-Free
 Status**
Not Reviewed

China RoHS



**Need more information on product
 environmental compliance?**

Email productcompliance@molex.com
 For a multiple part number RoHS Certificate of
 Compliance, [click here](#)

Please visit the [Contact Us](#) section for any
 non-product compliance questions.

Search Parts in this Series

[85050Series](#)

Mates With

DIN 41612/EIC 603-2 Mixed Layout
 Connector [85009](#) , [85017](#)

Material Info

Reference - Drawing Numbers

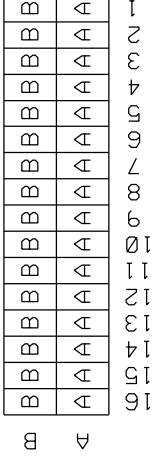
Sales Drawing

SDA-85050-0000, SDA-85050-0002

This document was generated on 05/17/2010

PLEASE CHECK WWW.MOLEX.COM FOR LATEST PART INFORMATION

VIEW ON MATING SIDE

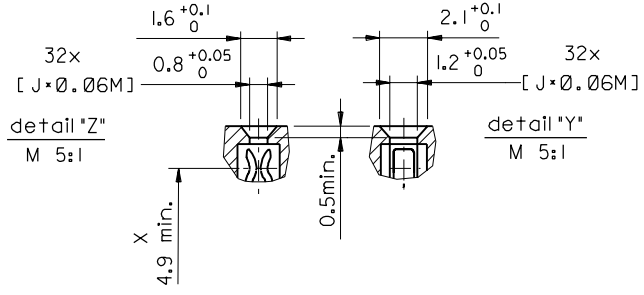
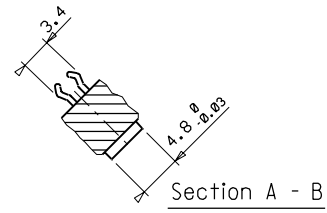
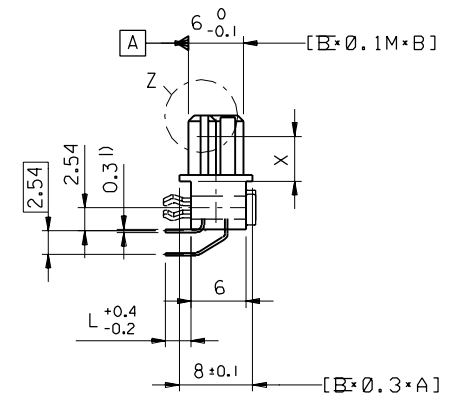
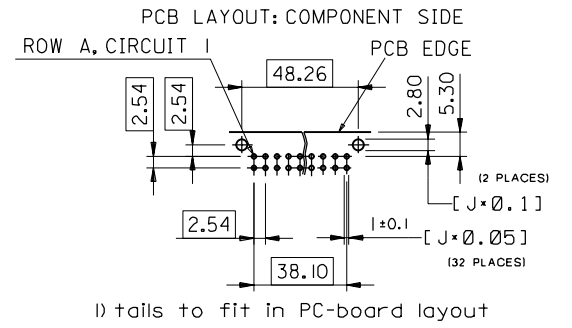
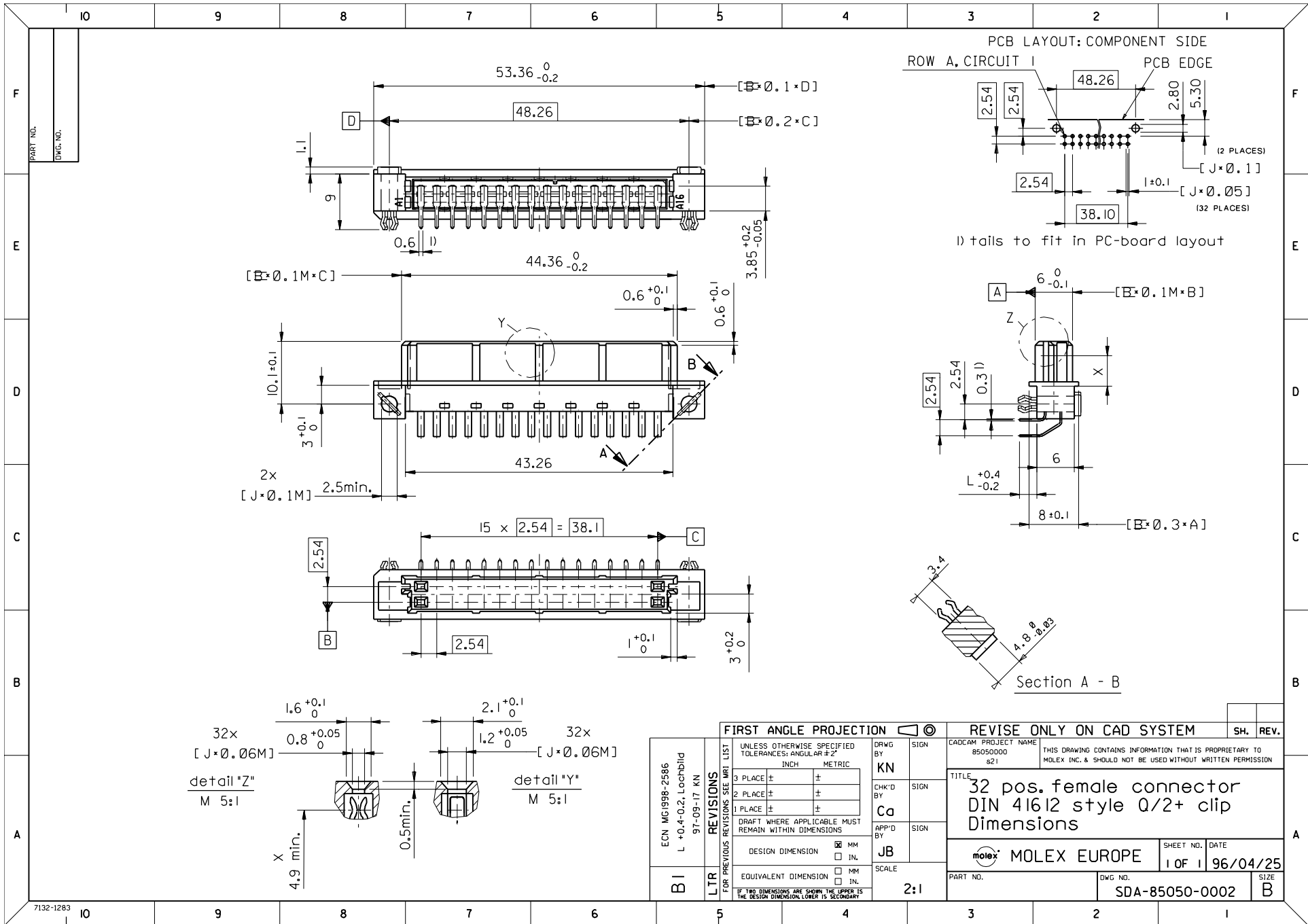


A = 16 CONTACTS L=2,8
B = 16 CONTACTS L=2,8
S = 32 TOTAL NUMBER OF CONTACTS

Marking	Standard
Performance level	G2/0 = Contact area perform. level2 / Termination tin
Flux proof	no
Fixing clip	no
Dimensions	SDA-85050-0002 sht.1
Technical Data	PS-85052-0001

B	G2/0 b1-l6
A	G2/0 a1-l6
Contact symbol	Perform. level Contact position number

ECN 2264 Produkt spec. 96-10-21 KN	FOR PREVIOUS REVISIONS SEE MRI LIST		DRWG BY Cd	SIGN	REVISE ONLY ON CAD SYSTEM	SH. REV.
	UNLESS OTHERWISE SPECIFIED TOLERANCES: ANGULAR ±2° INCH METRIC		CHK'D BY KN	SIGN	CADCAM PROJECT NAME s8505000 s01	THIS DRAWING CONTAINS PROPRIETARY TO MOLEX INC. & SHOULD NOT BE USED WITHOUT WRITTEN PERMISSION
	3 PLACE ± . ± 2 PLACE ± . ± 1 PLACE ± . ±	DESIGN DIMENSION <input type="checkbox"/> MM <input type="checkbox"/> IN. EQUIVALENT DIMENSION <input type="checkbox"/> MM <input type="checkbox"/> IN.	APPD BY	SIGN	TITLE 32 pos. female connector acc. DIN 41612 style A/2 contacts arrangement	SHEET NO. DATE 1 OF 1 96/06/13
LTR A-1	REVISIONS	PART NO. 85050-0000				SIZE SDA-85050-0000
IF TWO DIMENSIONS ARE SHOWN, THE UPPER IS THE DESIGN DIMENSION, LOWER IS SECONDARY						



FIRST ANGLE PROJECTION		REVISE ONLY ON CAD SYSTEM		SH.	REV.
UNLESS OTHERWISE SPECIFIED TOLERANCES: ANGULAR ± 2°		DRWG BY	SIGN	CAD/CAM PROJECT NAME	
INCH METRIC		KN		85050000	
3 PLACE ± ±		CHK'D BY	SIGN	THIS DRAWING CONTAINS INFORMATION THAT IS PROPRIETARY TO MOLEX INC. & SHOULD NOT BE USED WITHOUT WRITTEN PERMISSION	
2 PLACE ± ±		Ca		TITLE	
1 PLACE ± ±		APP'D BY	SIGN	32 pos. female connector	
DRAFT WHERE APPLICABLE MUST REMAIN WITHIN DIMENSIONS		JB		DIN 41612 style Q/2+ clip	
DESIGN DIMENSION <input checked="" type="checkbox"/> MM		SCALE		Dimensions	
EQUIVALENT DIMENSION <input type="checkbox"/> MM		2:1		MOLEX EUROPE	
IF TWO DIMENSIONS ARE SHOWN THE UPPER IS THE DESIGN DIMENSION, LOWER IS SECONDARY		SHEET NO. DATE		SHEET NO. DATE	
		1 OF 1		196/04/25	
PART NO.		DWG NO.		SIZE	
SDA-85050-0002		SDA-85050-0002		B	